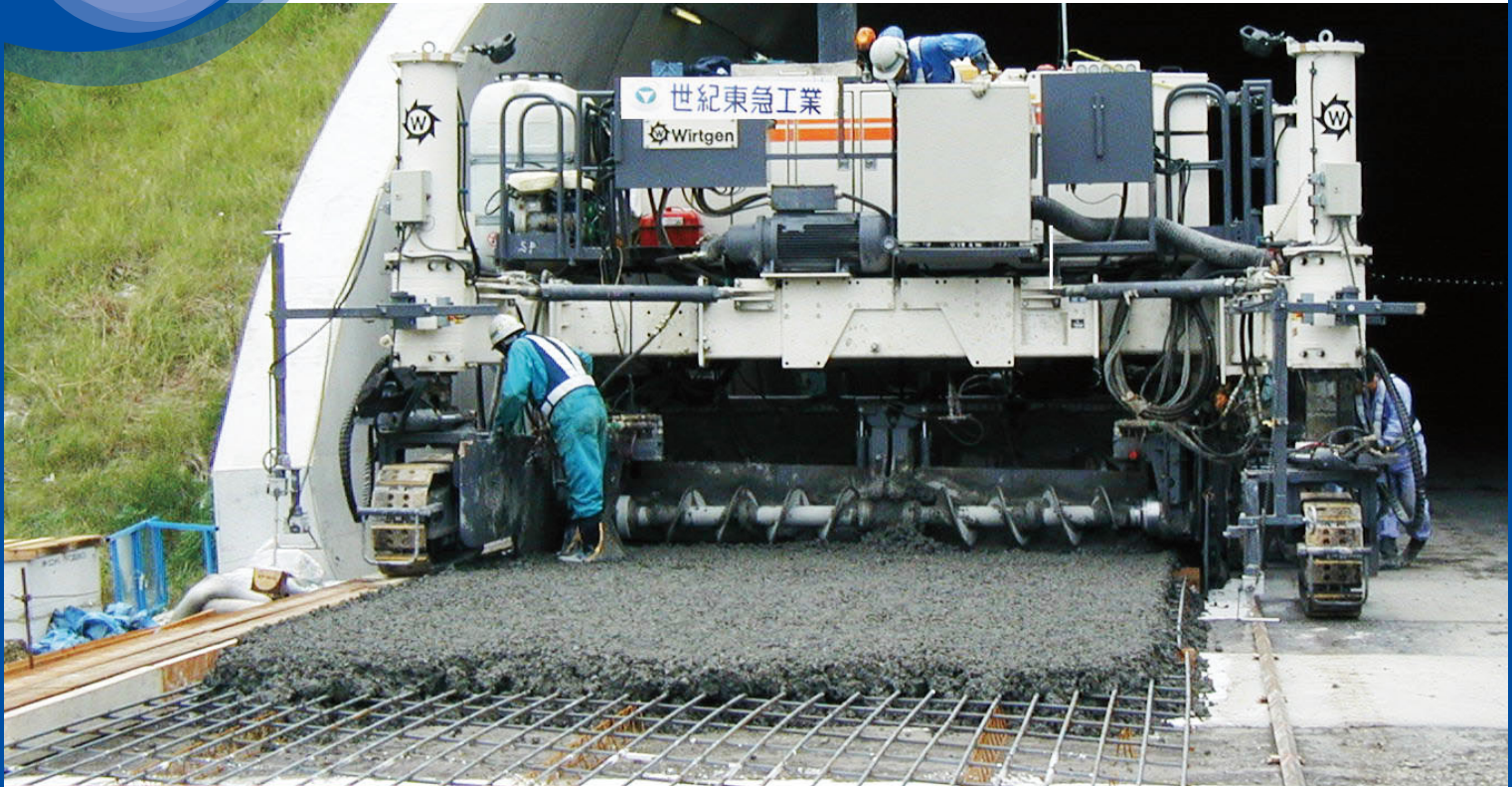


Roads, Airfields,
Bridges and Tunnels
(Concrete-based)

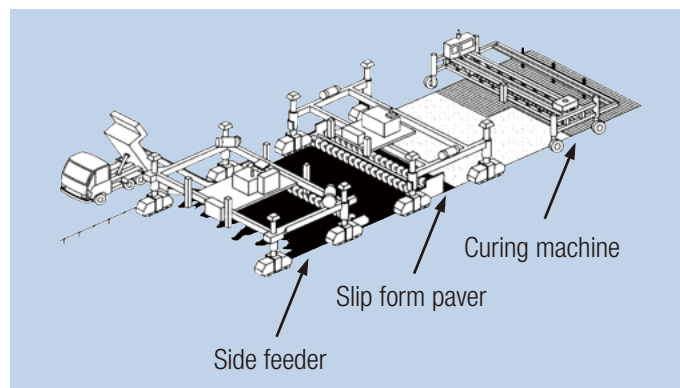
Slip Form Method



This method is to construct a concrete pavement slab without framing using special machinery.

Overview

- In the slip form method, paving is done using a special-purpose slip form paver, without installing framing. With this method, concrete structures with the same cross-section are finished continuously using a steel mold.
- This system is used for ordinary concrete slabs and continuous reinforced concrete slabs.



Features

- Economy is far superior to the set form method because work is done without using framing.
- Work can be done with less special operators or workers since less machine setup is needed than the set form method.
- Shortens construction time as the machine is able to do a large amount of work per day.

Applications

- Concrete pavement for expressways, ordinary roads, and airfields